



Impro.LIFT

The home solution

250 - 385 Kg



## The lift for your home

Whether you are a lift installer, a consultant or a homeowner looking for an efficient lift solution which takes up little space, is easy to install and increases a property's value, we are delighted to offer you simply the best solution on the market.

**Improlift®** is a stylish residential lift suitable for all kinds of different environments. **Improlift®** offers freedom of movement within the home to those for whom stairs represent an insurmountable obstacle, and actively improves their quality of life.

**Improlift®** has been specially designed for passenger transport in family homes, which usually have very limited space available for lift installation. Its competitive sizing and significant advantages over the competition make **Improlift®** the stand-out solution for family homes.

In most existing buildings where lack of space limits or rules out normal pit depth or headroom, the straightforward solution is **Improlift®**.

**Improlift®** can be installed both indoors or outdoors.





### **An elegant lift at your own home**

**Improlift®** shows that a lift can be a warm and welcoming space within any home.

**Improlift®** is designed to fit in with any surroundings - and to effortlessly improve them. The lift travels inside its own modular freestanding structure which can be supplied in a wide choice of colors or finished with glazed walls by request, adding a touch of sophistication to any home.

We offer a full range of robust and elegant lift cars which are able to satisfy the most demanding tastes and needs, being ideal to harmonize with a great variety of architectural environments.

### **No major building work. No pit**

Installing an **Improlift®** involves no complicated building work thanks to the robust freestanding structure which forms the lift shaft and which only requires the space which it itself takes up. All this not only gets rid of the major nuisance involved in having building work carried out inside your own home, but also represents major financial savings.

If required, **Improlift®** can also be installed within a masonry-built shaft.

## The safety and reliability you expect

The safety features supplied as standard with the **Improlift®** are carefully designed to make it safe and reliable. Passenger safety is ensured by a 2D optically-activated lift car stop mechanism which brings the lift car to a smooth stop on detection of the slightest movement within that area.

We also offer lift users optional extras to increase security according to their particular needs. Keyed switches can be fitted in order to prevent use by unauthorized personnel. A safety device is available, in case of power cuts, which automatically returns the car to the ground floor to allow the safe exit of lift passengers.

**Improlift®** is compliant with AS1735.18 and offers three-year warranty\*.

## An energy efficient and environmentally friendly product

**Improlift®** guarantees low energy consumption and running costs by using the standard household 220-240V outlets. In fact, an **Improlift®** consumes as much energy as a standard household appliance.

**Improlift®** can optionally operate with an ecologically-sound biodegradable fluid which is not environmentally harmful.

---

*\*Three-year warranty against defects in manufacture of mechanical parts and one-year warranty against defects in manufacture of electrical items, hydraulic unit and door*





# Standard technical features

Rated speed	0.15m/s	0.30m/s
	<i>Compliant with the Australian/New Zealand Standard AS/NZS 1735.18.</i>	<i>Compliant with the Australian/New Zealand Standard AS/NZS 1735.18.</i>
<b>Rated loads</b>	115, 250, 315 or 385kg	115, 250, 315 or 385kg
<b>Entrances</b>	Single, or double at 90° or 180° (triple entrance not available)	Single, or double at 90° or 180° (triple entrance not available)
<b>Hydraulic power unit</b>	HL 6000, central	GL, central
<b>Pistons</b>	HL 6000 pistons, 55, 65 & 75mm	HL 6000 pistons, 55, 65 & 75mm
<b>Maximum travel</b>	12m	385Kg capacity lifts, maximum travel: 9m* From 115Kg up to 315Kg capacity lifts, maximum travel: 12m*
<b>Power</b>	1.5kW or 2.2kW	2.2kW or 3.4kW
<b>Headroom</b>	Car internal height + 400mm / + 500mm with automatic landing door	Car internal height + 400mm / + 500mm with automatic landing door
<b>Minimum pit depth</b>	120mm / 200mm with automatic landing door	120mm / 200mm with automatic landing door
<b>Car internal height</b>	2100mm (vertical clearance: 2000mm)	2100mm (vertical clearance: 2000mm)
<b>Car widths</b>	From 650 to 1100mm (see tables)	From 650 to 1100mm (see tables)
<b>Car depths</b>	From 700 to 1400mm (see tables)	From 700 to 1400mm (see tables)
<b>Min. necessary shaft width</b>	Car width + 255mm / + 290mm if double entrance at 90°	Car width + 255mm / + 290mm if double entrance at 90°
<b>Min. necessary shaft depth</b>	Car depth + 145mm / + 180mm if double entrance at 180°	Car depth + 145mm / + 180mm if double entrance at 180°
<b>Horizontal entrance clearance</b>	600, 800 or 900mm (triple entrance not available)	600, 800 or 900mm (triple entrance not available)
<b>Vertical entrance clearance</b>	2000mm	2000mm
<b>Hydraulic hose</b>	Maximum length 5m	Maximum length 5m

\* Information valid for RL200, RL300 and RL Stainless steel cars. For scenic cars please contact our Sales Dept.

The **Improlift®** can be installed in a built shaft or a metal structure.

## Standard equipment

Lift car: skinplate finish (RL200 series)

---

Lift car: stainless steel button panel set in centre of wall closest to mechanism

---

Rubber floor (Ref. S45GN)

---

LED lighting

---

No mirror

---

No handrail

---

No lift car door

---

Hinged doors with small glass panels and 125 mm door frame. Epoxy RAL 7032 finish  
EN81-58 fire-resistant for 120 minutes

---

2D emergency lift car stop mechanism

---

Microprocessor-based control system

---

Landings: call push-buttons mounted on the door frame

---

Acoustic alarm button

---

Emergency lighting

---

Guide rails: 5m

---

Information notices

---

Pressurestat

---

Manually-operated emergency pump for raising car to landing

---

Automatic Push Button lift control system

---

Stop Switch

---

Single Phase Supply

---

Shaft Lighting

---

---

## Available Extras

### Lift and hydraulic motor control cabinet

- E-400 lift and hydraulic motor control cabinet size (700w x 400d x 1500mm h) for  $nN=0.15\text{m/s}$
- E-500 lift and hydraulic motor control cabinet size (960w x 510d x 2160mm h) for  $nN=0.3\text{m/s}$  GL power unit

### Floor

20mm granite car floor finish with 140mm pit depth

### Landing doors

- Hinged doors with small glass panels 100mm frame option (EN81-58 fire-resistant)
- Landing door, Automatic hinged doors with large glass panels
- Horizontal entry clearance: 650, 750 or 850mm
- Vertical entry clearance: 1850, 1900 or 1950mm
- Option motorized

### Car door

Automatic bus-type lift car doors with or without glass panel, flat or folding (+ 25mm. shaft depth per entrance, + 200mm pit depth, headroom=vertical entry clearance + 450mm)

### Control electronics

- Radar sensor technology with automatic landing door
- Push-button door opening, no in-car Stop button when there is car door
- Restricted-use key
- Portable inspection kit
- External push-button panels
- Visual and accoustic overload signal
- Voice announcer
- Car Light timer
- Automatic emergency rescue device







### Car

- Full-height mirror, one-third of car wall width
- Panoramic lift car. RAL9006 silvered paint finish option for floor, ceiling and safety catches
- Internal lift car height: 2000 o 2200
- Stainless steel round handrail on one side of the car

### Entrances

Three entrances to be studied for each project

### Guides

- Guide rail 2,5m
- Guide rail oil spill collector

### Structure

- Steel shaft structure
- Structure painted in a different colour (RAL)

### Digital indicators

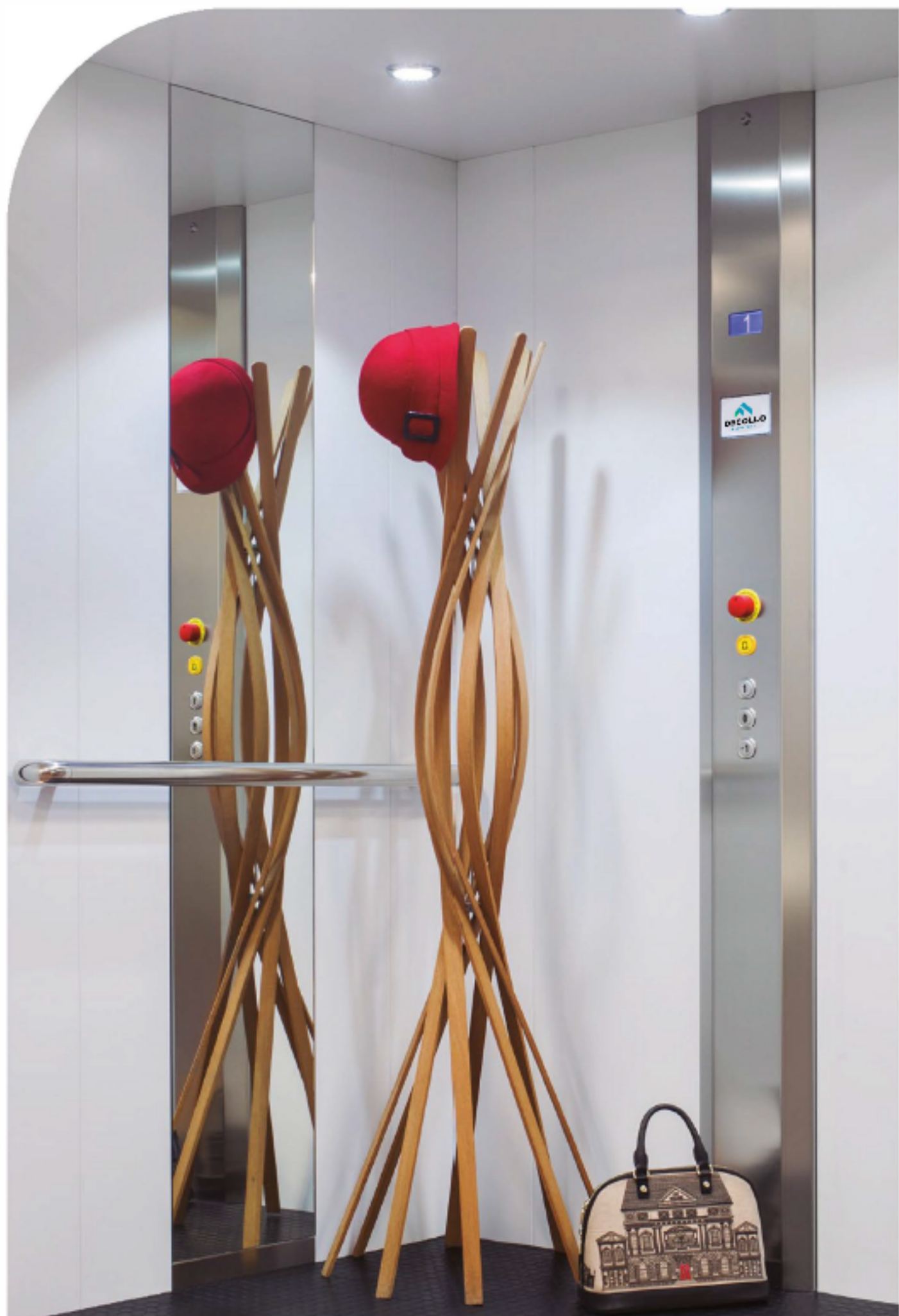
- LCD display within lift car
- LCD display on outside door
- Seven inches display

### Eco

\*Biodegradable non-contaminant lubricant (for the central hydraulic motor)

### Others

- Main electrical supply box
- Ramp of 120mm (without pit)
- Ramp of 140mm (without pit and granite floor in the car)
- Installation tools: Jigg and lifting hook or safety gear releasing pedal
- Telephone sited within button control panel
- Part 16 compliance
- Manually operated emergency pump for raising car to landing



## RL 200

The RL 200 model offers a highly functional design, based on its straightforward modular panel construction and a fresh and up-to-date range of colour options - an unbeatable combination of value for money and guaranteed reliability.

- Car wall panels finished in plastic laminates (skin plate) in a choice of colours
- Hard-wearing floor finishes in rubber, vinyl, marble or granite
- Direct in-car lighting with LED spots





## RL 300

The RL 300 car has a clean minimalist design, is extremely robust and versatile and the numerous interior design options ensure a perfect match with the look of your home or office.

- Car wall panels fixed to the metal structure and finished in durable and decorative Formica laminate, available in a wide range of colours
- Hard-wearing floor finishes in rubber, vinyl, marble or granite
- Direct in-car lighting with LED spots





## RL stainless steel

The stainless steel lift car is an elegant, sophisticated and state-of-the-art option, which fits in well with any surroundings - and always impresses.

- Car wall panels in natural stainless steel, elephant skin or linen finish
- Hard-wearing floor finishes in rubber, vinyl, marble or granite
- Direct in-car lighting with LED spots





## RL customised

Do you want your lift car specially made to fit in perfectly with the design of your home or office? Are you looking for a completely exclusive lift which corresponds exactly to your own tastes and needs? With our RL Customised model and our in-house printing and pressing plant, all you need to do is tell us the exact motifs, images or decorative designs\* you want for your lift car, and we will manufacture it to suit.

- Car wall panels fixed to the metal structure and finished in durable and decorative Formica laminate, available in a wide range of colours, combined with screen-printed glass panelling
- Hard-wearing floor finishes in rubber, vinyl, marble or granite
- Direct in-car lighting with LED spots

---

*\*To be printed, the image must be at least ¼ of the real size, chromatically in CMYK and not less than 300dpi*







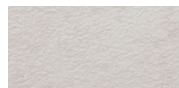
## RL panoramic

Panoramic lift cars are strikingly beautiful and can be the ideal choice in spacious or outdoor settings.

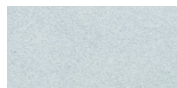
- Car wall panels in laminated safety glass (5+0.76+5mm)
- The section of the car wall where the car operating panel is mounted is finished in stainless steel or plastic laminate (with a decorative design, if desired)
- Hard-wearing floor finishes in rubber, vinyl, marble or granite
- Direct in-car lighting with LED spots

# Wall panels

## Skinplate



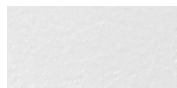
P 222



P 260



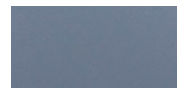
P 270



P 280



P 412



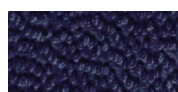
P 422



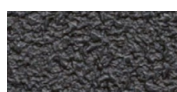
P 432



P 201



P 202



P 203



P 204



P 205



P 206



P 208

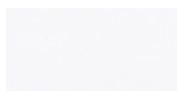


P 209

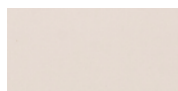
## Formica



P 301



P 302



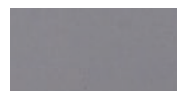
P 303



P 304



P 305



P 306



P 307



P 308



P 309



P 310



P 311



P 312



P 313



P 314



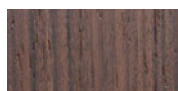
P 315



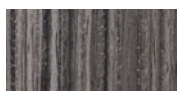
P 316



P 317



P 318



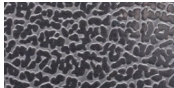
P 319

# War panels

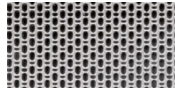
## Stainless Steel



Inox



Elephant skin



Inox Linen

# Floors



Ref.: S45 GN



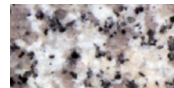
Ref.: S52 GN



Ref.: S62 GG



Ref.: S27 MB

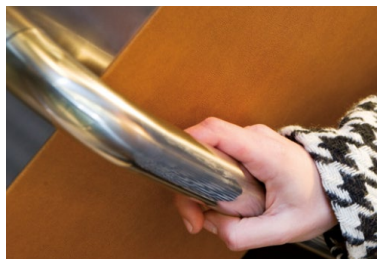


Ref.: S29 MB

# Lift car detailing



2D optically-activated  
emergency lift car stop  
mechanism



Stainless steel handrails



Push-buttons

## Available door options

We offer the option of fitting bus-type lift car doors, programmed to remain open when the car is at rest.

Other door options are also available. Please contact us for further information.



Automatic bus-type lift car doors



Hinged doors with small glass panels



Hinged doors with large glass panels

## Display

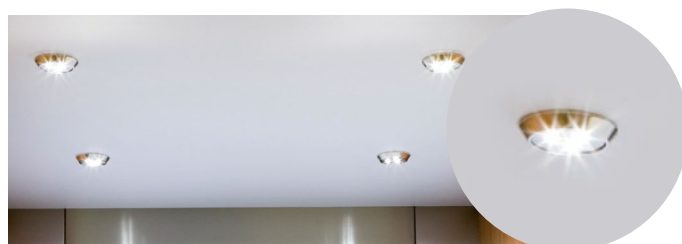


**LCD** Car position and direction indicator that also shows a message when the lift is in error mode. Available in 3" and 5" versions.



**Seven inches colour display** which provides information of floor and direction.

## Car lighting



Ceiling with LED spots





# 115Kg model: measurements

## 115Kg · 1 ENTRANCE (MECHANISM SIDE-MOUNTED)

Lift car		Shaft interior		Max entry clearance	Door Frame width
A	B	C	D	E	F
650	850	905	995	600	850
800	700	1055	845	700	950
750	750	1005	895	700	950
650**	700**	905	845	600	850

## 115Kg · 2 ENTRANCES AT 180°

Lift car		Shaft interior		Max entry clearance	Door Frame width
A	B	C	D	E	F
650	850	905	1030	600/600	850/850
775	700	1030	880	700/700	950/950
750	725	1005	905	700/700	950/950
650**	700**	905	880	600/600	850/850

## 115Kg · 1 ENTRANCE (MECHANISM REAR MOUNTED)

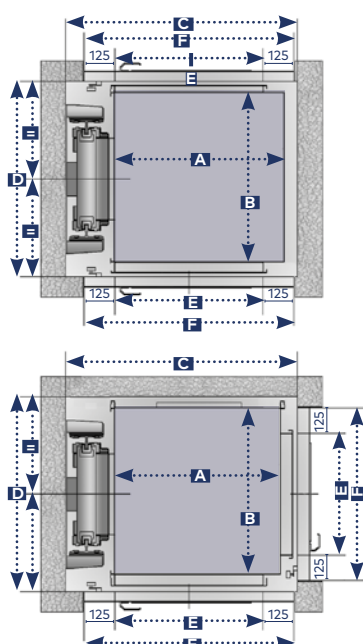
Lift car		Shaft interior		Max entry clearance	Door Frame width
A	B	C	D	E	F
650	850	905	995	700	950
725	770	1015	880	600	850
600	925	890	1035	700	950
600**	770**	890	880	600	850

## 115Kg · 2 ENTRANCES AT 90°

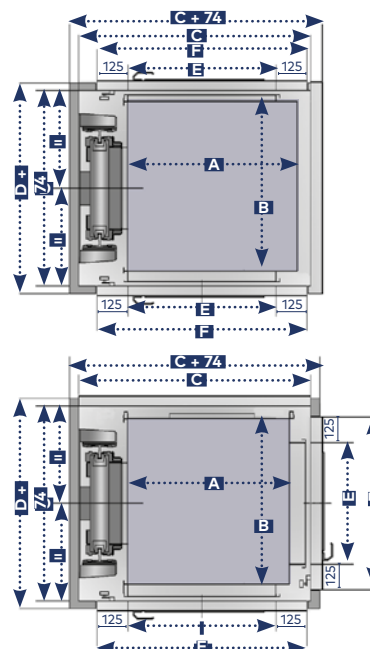
Lift car		Shaft interior		Max entry clearance	Door Frame width
A	B	C	D	E	F
775	725	1065	870	700/600	950/850
725	775	1015	920	600/600	850/850
675	810	965	955	600/700	850/950
675**	710**	965	855	600/600	850/850

\*\* Cars with Eco-Bus doors require 25mm increased depth per entrance // \*Other dimensions available to suit existing shafts - contact us

CONCRETE/MASONRY SHAFT



STEEL STRUCTURE OR TOWER



# 250Kg model: measurements

## 250Kg · 1 ENTRANCE (MECHANISM SIDE-MOUNTED)

Lift car		Shaft interior		Max entry clearance	Door Frame width
A	B	C	D	E	F
850	1400	1105	1545	800	1050
1000	1250	1255	1395	900	1150
1100	1125	1355	1270	900	1150
750**	750**	1005	895	700	950

## 250Kg · 2 ENTRANCES AT 180°

Lift car		Shaft interior		Max entry clearance	Door Frame width
A	B	C	D	E	F
850	1400	1055	1580	800/800	1050/1050
1000	1250	1255	1430	900/900	1150/1150
1100	1125	1355	1305	900/900	1150/1150
750**	750**	1005	930	700/700	950/950

## 250Kg · 1 ENTRANCE (MECHANISM REAR MOUNTED)

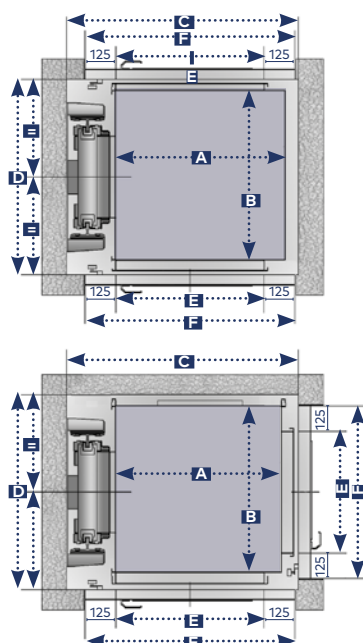
Lift car		Shaft interior		Max entry clearance	Door Frame width
A	B	C	D	E	F
1100	950	1390	1060	800	1050
1100	1100	1390	1210	900	1150
1000	1250	1290	1360	900	1150
750**	750**	1040	860	600	850

## 250Kg · 2 ENTRANCES AT 90°

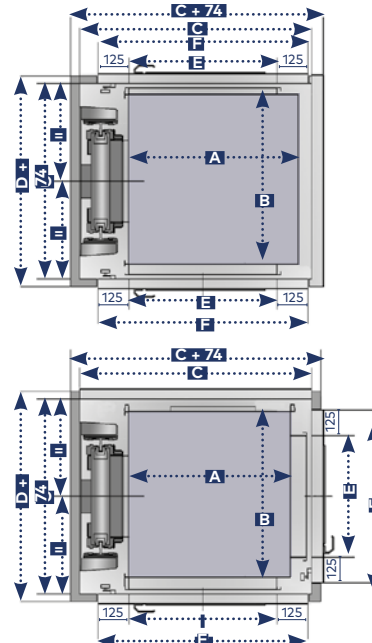
Lift car		Shaft interior		Max entry clearance	Door Frame width
A	B	C	D	E	F
850	1400	1140	1545	800/900	1050/1150
1000	1250	1290	1395	900/900	1150/1150
1100	1125	1390	1270	900/900	1150/1150
750**	750**	1040	895	700/600	950/850

\*\* Smaller lift car available. // \*Cars with Eco-Bus doors require 25mm increased depth per entrance

CONCRETE/MASONRY SHAFT



STEEL STRUCTURE OR TOWER



ALL DIMENSIONS EXPRESSED IN MILLIMETRES

# 315/385Kg model: measurements

## 315/385Kg · 1 ENTRANCE (MECHANISM SIDE-MOUNTED)

Lift car		Shaft interior		Max entry clearance	Door Frame width
A	B	C	D	E	F
1100	1400	1355	1545	900	1150
1100	1200	1355	1345	900	1150
1000	1300	1255	1445	900	1150
900	1400	1155	1545	800	1050
800**	750**	1055	895	700	950

## 315/385Kg · 2 ENTRANCES AT 180°

Lift car		Shaft interior		Max entry clearance	Door Frame width
A	B	C	D	E	F
1100	1400	1355	1580	900/900	1150/1150
1100	1200	1355	1380	900/900	1150/1150
1000	1300	1255	1480	900/900	1150/1150
900	1400	1155	1580	800/800	1050/1050
800**	750**	1055	930	700/700	950/950

## 315/385Kg · 1 ENTRANCE (MECHANISM REAR MOUNTED)

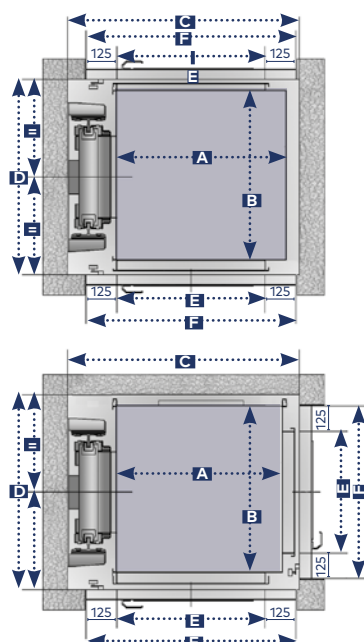
Lift car		Shaft interior		Max entry clearance	Door Frame width
A	B	C	D	E	F
1100	1400	1390	1510	900	1150
1100	1200	1390	1310	900	1150
1000	1300	1290	1410	900	1150
900	1400	1190	1510	800	1050
750**	850**	1040	960	700	950

## 315/385Kg · 2 ENTRANCES AT 90°

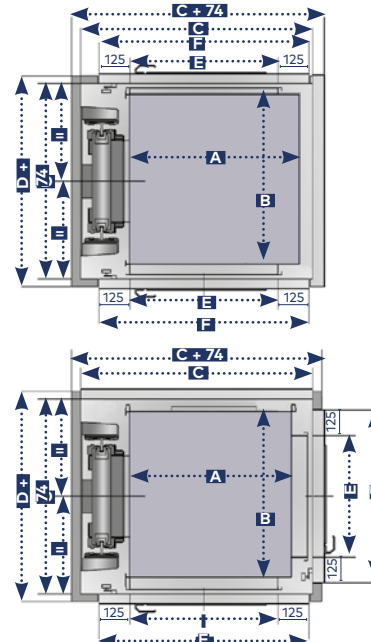
Lift car		Shaft interior		Max entry clearance	Door Frame width
A	B	C	D	E	F
1100	1400	1390	1545	900/900	1150/1150
1100	1200	1390	1345	900/900	1150/1150
1000	1300	1290	1445	900/900	1150/1150
900	950	1190	1095	800/800	1050/1050
800	850**	1090	995	700/700	950/950

\*\* Smaller lift car available. // \*Cars with Eco-Bus doors require 25mm increased depth per entrance

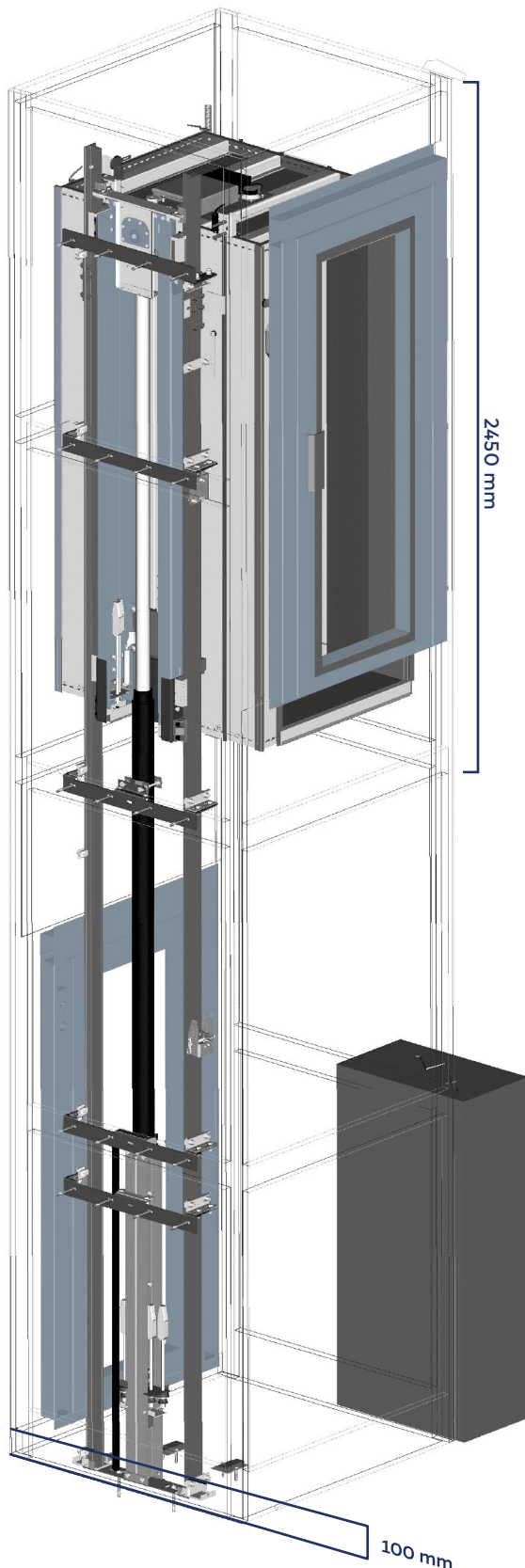
CONCRETE/MASONRY SHAFT



STEEL STRUCTURE OR TOWER



ALL DIMENSIONS EXPRESSED IN MILLIMETRES



### Lift Cars

**Improlift®** offers the choice of five different lift car models to fit in perfectly with every type of interior design. All our cars are carefully designed and manufactured and stand out for their exceptional quality and durability.

### Doors

See all available door options in page 22.

### Durable Finishes

Most of the shaft lift components such as the car frame, brackets etc. are supplied epoxy coated, which protects the parts against corrosion.

### Control System

Our Altamira lift control system - developed and designed from start to finish by our own R&D+i department - governs Improlift®'s operation with surgical precision, exploiting to the full its top-class specifications. The Altamira control system requires minimal wiring, thanks to its smart peripheral components using CAN bus networking.

### Pit

With **Improlift®** you can thankfully forget about the major inconvenience of digging out a lift shaft pit. The freestanding structure incorporates its own 120mm pit and includes a simple ramp. Where the shaft is masonry-built, pit depth is only 120mm.



[www.decolloelevators.com](http://www.decolloelevators.com)

elevate your space

[hello@decolloelevators.com](mailto:hello@decolloelevators.com)

<b>AENOR</b>	<b>AENOR</b>	<b>AENOR</b>
GESTIÓN DE LA CALIDAD	SEGURIDAD Y SALUD EN EL TRABAJO	GESTIÓN AMBIENTAL
ISO 9001	ISO 45001	ISO 14001
ER-0426/1997	SST-0008/2008	GA-2008/0458



Decollo reserves the right to change specifications, options and colours in this catalogue. All images in this brochure are for description purposes only. Colours and materials might not be exactly the same as the actual ones.